



USING PARTITION WIZARD

Get Started

Tool Bar, Legend Bar, Action Panel

Disk Map Location

Change Font

Partition Wizard Main

Window

Disk & Partition

Selecting An

Operation

All Changes

Discard All Changes

Exit

Reload Disk

Undo Last Changes

Help

Offline Activation

Featured Functions



Disk/Partition Conversion

Manage Basic Disk

Manage Basic Partition

Manage Dynamic Disk

Copy Disk Wizard | MiniTool Partition Wizard Tutorial [Help]



Facebook



Twitter



Linkedin



Reddit

Quick Navigation :

- [Copy Disk Wizard](#)
- [How to Copy Disk](#)



Copy Disk Wizard

The copy disk wizard function helps to copy all partitions and data from one disk to another. All partition data on the target disk can be used normally. Users even can boot the computer from the copy of the source disk. Here is a quick video guide:

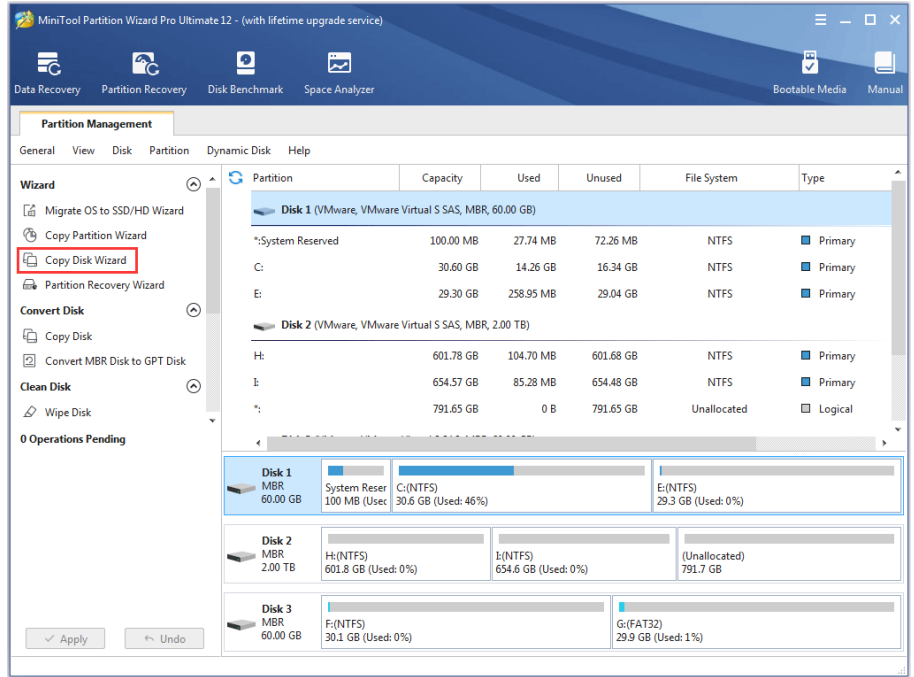
How to Copy System Disk via MiniTool Partiti...



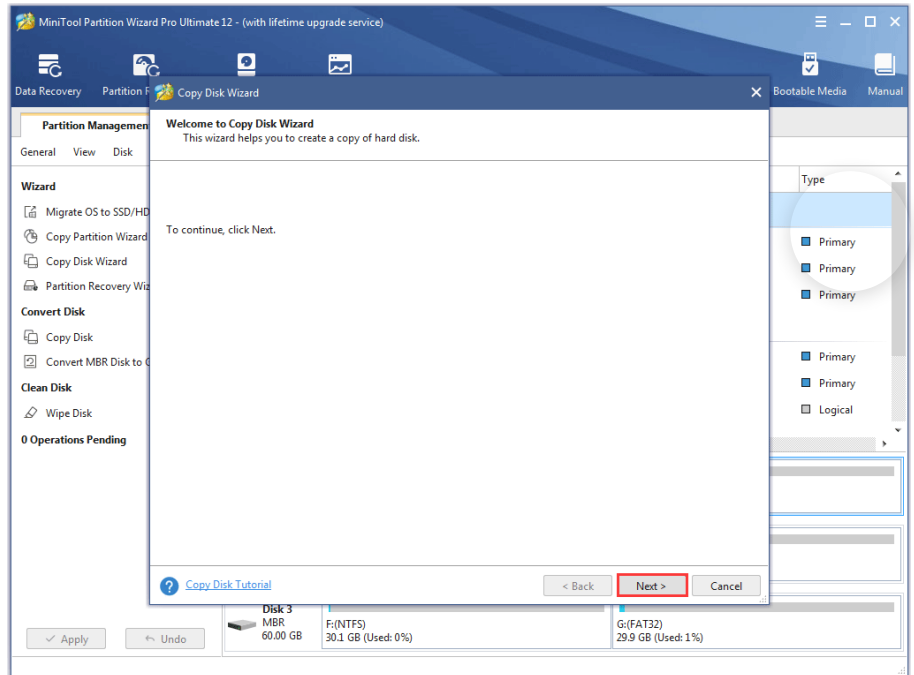
Note: Target or new disk should be large enough to hold all data on the source disk.

How to Copy Disk

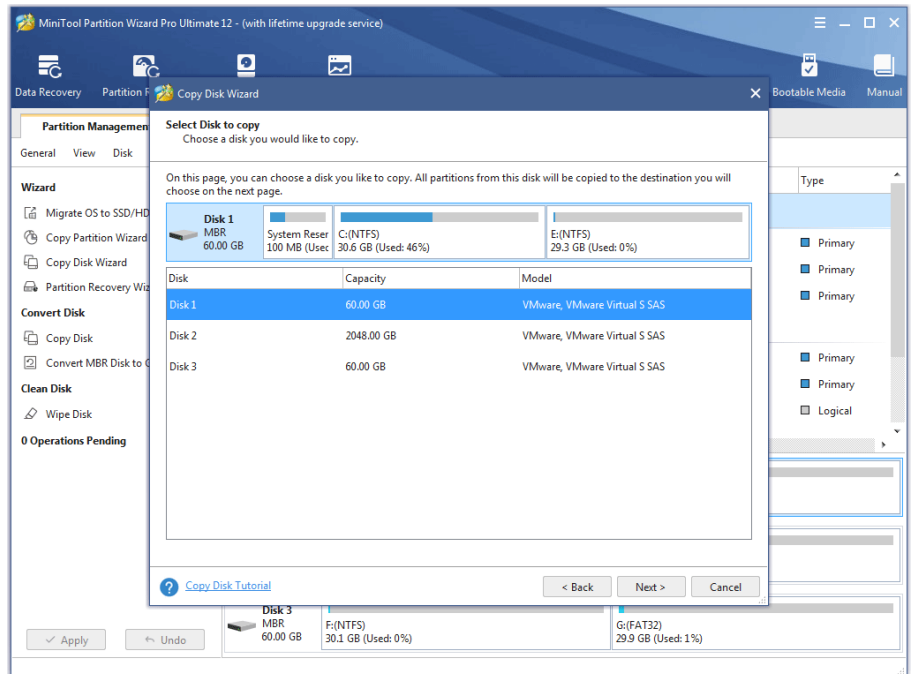
Step 1. Run MiniTool Partition Wizard to get its main interface, directly choose the **Copy Disk Wizard** from the toolbar.



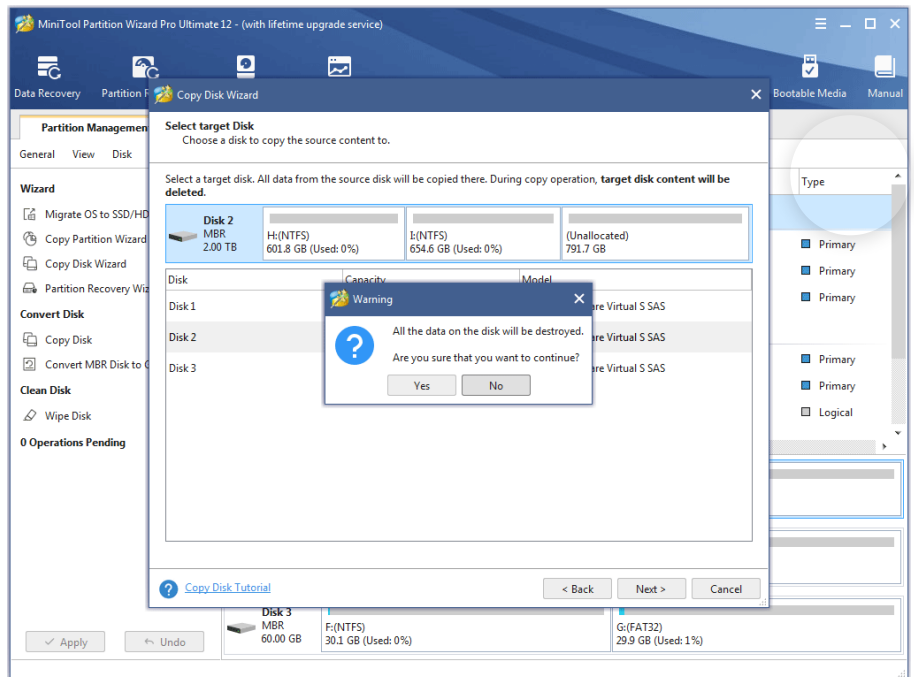
Step 2. Click **Next** to continue.



Step 3. Select the disk users would like to copy and click **Next**.

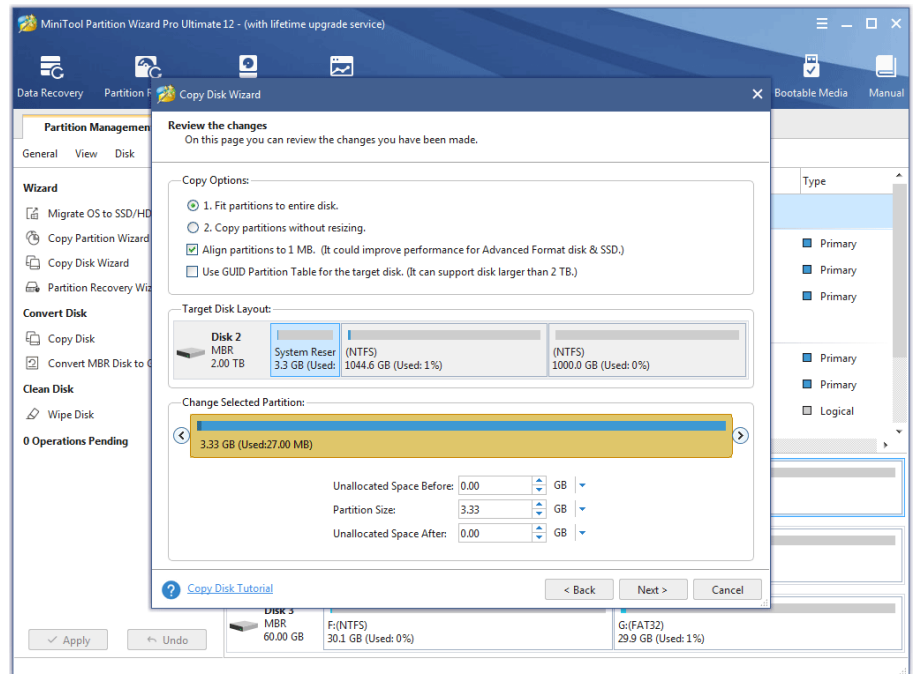


Step 4. Choose a target disk where the copy will be stored and click **Next** to continue. Then click **Yes** to continue.



Note: Please backup important data on the target disk in advance because all its data will be deleted during copy operations.

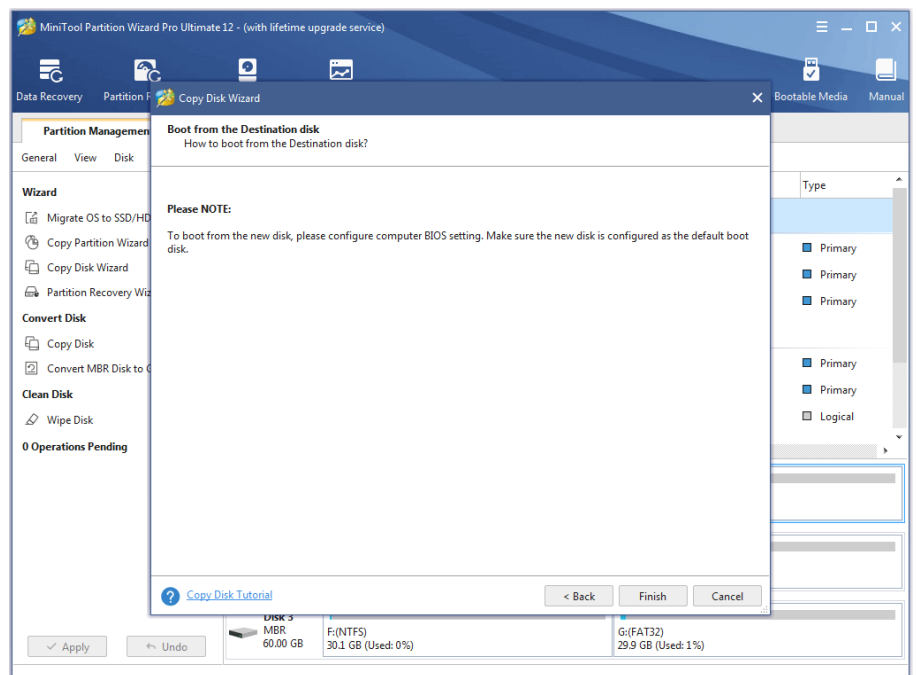
Step 5. Choose a copy method and click **Next**.



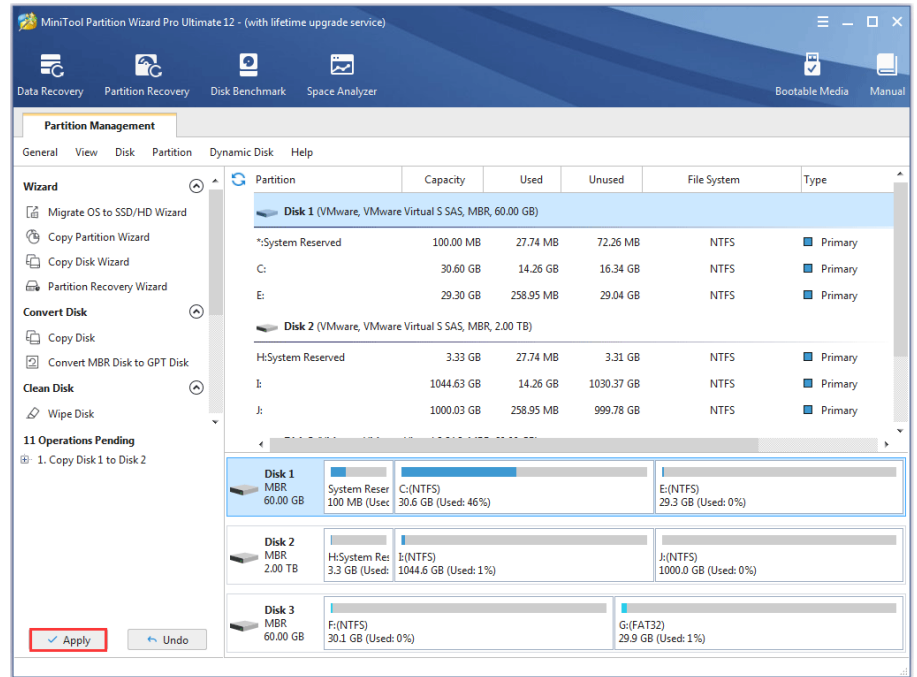
Attention:

1. For SSD users, it is highly recommended to **Align partitions to 1MB** option, which can improve disk performance.
2. If users want to copy disk to GPT disk, **Use GUID Partition Table for the target disk** option is limited in Free Edition of MiniTool Partition Wizard, but the Professional Edition or an advanced one is available.

Step 6. Read the note carefully which shows how to boot from the target disk, and click **Finish** to go back to the main interface.



Step 7. Click **Apply** to execute all changes.



[Facebook](#)
[Twitter](#)
[LinkedIn](#)
[Reddit](#)

Products

- MiniTool Partition Wizard Free Edition
- MiniTool Partition Wizard Pro Edition
- MiniTool Partition Wizard Server Edition
- MiniTool Partition Wizard Bootable
- Compare Editions

Resource

- Resize Partition
- Partition Manager
- Partition Magic
- Disk Recovery
- Clone Disk

Support

- Software FAQ
- Online Help
- Reviews

Follow Us





Language ▾

Terms & Conditions | Privacy

North America, Canada, Unit 170 - 422, Richards Street, Vancouver, British Columbia, V6B 2Z4
 Asia, Hong Kong, Suite 820,8/F., Ocean Centre, Harbour City, 5 Canton Road, Tsim Sha Tsui, Kowloon

Copyright © 2020 MiniTool® Software Limited, All Rights Reserved.